

RIDE RESPONSIBLY

Off-highway vehicles can cause permanent damage to the desert environment by destroying wildlife habitat, killing native vegetation, and creating lasting scars. It is important for you to ride courteously and responsibly so you don't disturb desert residents and the environment.

A responsible rider will always:

- Respect private property and never trespass.
- Ride slowly, being careful not to create noise or dust when in neighborhoods. Remember, sound and dust can travel a long way.
- Stay on roads and trails designated for off-highway vehicle use.
- Remember that much of the open desert in the Morongo Basin is private property.
- Stay out of areas that are closed to riding such as wilderness areas or Joshua Tree National Park.
- Slow down to 15 MPH when passing horses, hikers, houses or campsites.
- Never vandalize signs or ride around barriers.
- Educate yourself by obtaining maps and regulations from public agencies.

Remember, it is critical that you respect the environment and the rights of others. Enjoy your sport but be a part of the solution, not a part of the problem!

RESTRICTIONS FOR OFF-ROAD RIDING

Below is a reference of regulations to keep in mind. Remember that any law enforcement officer can enforce these regulations. Violations of off-highway vehicle regulations can result in a fine and/or jail sentence.

- Observe all traffic safety laws. *if your OHV cannot be registered for highway use, it cannot be used on any road.*
- Off-road vehicles are not allowed in wilderness areas.
- All Vehicle Codes apply in County Service Area (CSA) Road Improvement Districts. *You may not use your OHV on any CSA maintained road unless it is registered for highway use.*

- Driving under the influence (DUI) of a controlled substance or alcohol or on a suspended driver's license applies off-road as well.
- Off-road vehicles are not allowed on public roadways or the shoulders of public roadways.
- Unless you are operating your off-road vehicle on private land, the vehicle must be registered with DMV and have the green sticker visible.
- When traveling within 50 feet of a campsite, horse back rider, bicyclist, hiker, livestock/wildlife, the speed limit is 15 MPH.
- It is a violation to cause damage to vegetation or wildlife.
- Headlights and taillights are required within ½ hour before sunrise and within ½ hour after sunset.
- A muffler and a spark arrester are always required.
- Children under 14 years of age must have direct supervision of a responsible adult.
- Helmets are required on ATVs and passengers are only allowed if the ATV is manufactured for them.

SAN BERNARDINO COUNTY ORDINANCE

- Riders must have written permission to ride on private land that is not their own. This includes riding on dedicated roadways, easements not accepted into a road system, fire or service roads, and trails, even if they are roughly graded.
- All OHV's must comply with state noise restrictions at the tailpipe.
- Riders must comply with all noise, dust and nuisance elements of the ordinance. For complaints contact San Bernardino County Code Enforcement.

RIDING SAFELY

Remember that while enjoying off-road riding, you not only have responsibilities to residents and the environment, but also to yourself! Off-road riding can be a dangerous sport and you must take special precautions so you or your family members are not injured.

- Call 1-877-RIDE-411 for ATV training.
- Always wear a helmet and protective clothing.
- Obey all of the legal restrictions listed in this brochure.

- Drive at a speed that is safe for the current conditions.
- Slow down and ride to the right side on blind curves; you might meet someone.
- Slow down at night.
- Watch out for other traffic.
- Always be aware of what's going on around you.
- **DANGER!** Beware of open mine shafts.
- Do not exceed your skill level! This is how most riders are seriously injured.
- Driving under the influence (DUI) or on a suspended driver's license applies off-road.
- Make sure someone knows where you will be riding.
- Use the buddy system and ride with a friend.
- In the desert, water is more important than gas!

IMPORTANT PHONE NUMBERS/WEB SITES

BLM/NPS/Forest Service Dispatch
(909) 383-5651

Bureau of Land Management—Barstow
(760) 252-6000

CHP Dispatch Center—Barstow
(760) 256-7617

Sheriff's Dispatch
(760) 366-3781

San Bernardino County Code
Enforcement Morongo Basin
(760) 366-4110

Marine Corps Air Ground Combat Center
(760) 830-7200

American Motorcycle Association
www.ama-cycle.org

California Off-Road Vehicle Association
www.corva.org

Community ORV Watch
www.orvwatch.com

Off-Highway Vehicle Information



RIDE RESPONSIBLY

IMPORTANT INFORMATION

This pamphlet provides an information source to off-highway vehicle riders in the Morongo Basin. If you have any questions or require additional pamphlets, call the San Bernardino County Sheriff's Department, Morongo Basin Station at (760) 366-4175.

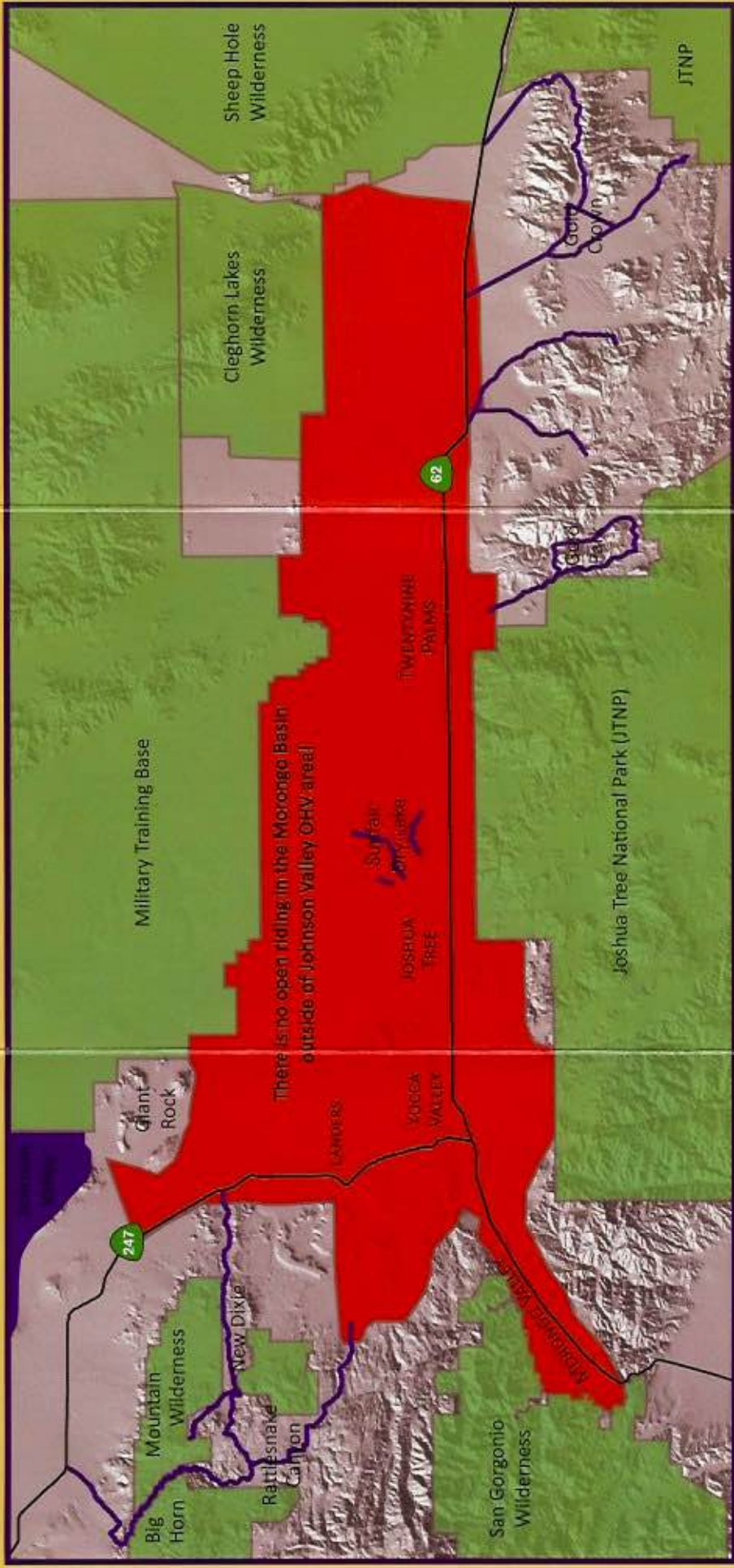
Off-highway operating rules apply to all motor vehicles driven on public lands legally open to vehicle use. Public lands include land managed by the Bureau of Land Management (BLM). Rules of the road are the same for off-road use. It is the responsibility of off-road drivers to follow the same rules as if the vehicle were on a public roadway.

AREAS TO RIDE

The map in this brochure identifies areas where you can ride. You must stay on designated routes and off private property that you do not have permission to ride on. If you prefer open riding, you must go to the BLM's Johnson Valley Off-Highway Vehicle Area. OHV areas are those specifically set aside for open cross-country riding and free play. There is no open riding in the Morongo Basin outside of Johnson Valley OHV area!

Johnson Valley OHV Area is the largest OHV area in the world and is located off of Highway 247 (Old Woman Springs Road), 35 miles north of Yucca Valley. Entrances include Boone Road, Bessemer Mine Road and Camp Rock Road. It has an excellent varied landscape for off-highway vehicle use, punctuated by steep, red, rocky mountains, rolling hills, open valleys, dry lakebeds, and sandy washes. Stay off rain-soaked dry lakebeds in order to keep vehicles from making permanent deep grooves.

Areas to Ride in the Morongo Basin



- Johnson Valley Off-Highway Vehicle Area
- Designated Routes Only — No Cross Country Travel
- Contact BLM for applicable rules and designated routes.

- San Bernardino County OHV Ordinance—applies in unincorporated areas or where adopted, except BLM land
- OHV Use Prohibited

The Bureau of Land Management has an open route network available for off-highway vehicle travel and touring in the Morongo Basin. Only Johnson Valley OHV Area, allows open cross-country travel. New Dixie Mine Road, Rattlesnake Canyon, Sunfair Dry Lake, Gold Park, and Gold Crown Road are limited access roads and trails. You must stay on designated, existing trails and roads. All vehicles operated within Joshua Tree National Park must be registered for highway use. This includes the Gold Park access road. The California Vehicle Code laws apply to most roads in the Morongo Basin. Remember, all land in this area is either public land, managed by BLM or someone's private property. Detailed maps are available through the Bureau of Land Management.